



## MOISTURE ABATEMENT SERVICES

### FREQUENCY CLAIMS WATER DAMAGE

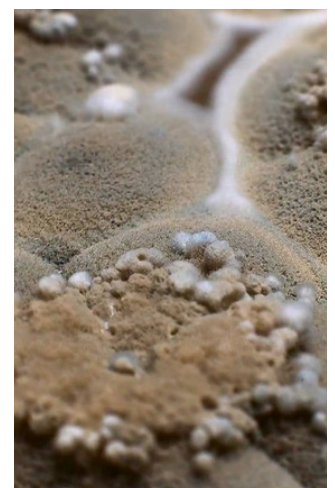
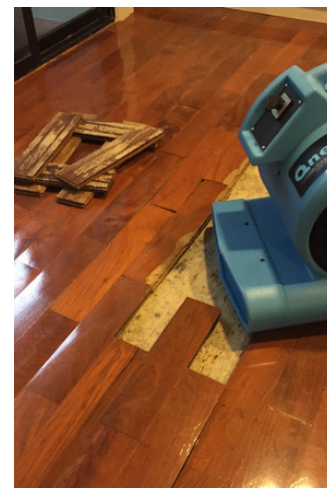
In terms of cost and frequency of claims, water damage is the leading cause of property losses in offices, hotels, commercial and residential buildings and other real estate facilities. Claim costs include physical damage, and may also include liability claims, additional living expenses, business interruption and loss of income while occupied spaces are repaired. Most water damage claims come as a result of accidents within the facilities and are not weather related. A well-crafted water damage mitigation plan may help reduce the risk of water damage; as well as limit the severity of damage should an incident occur



### SERVICES & PACKAGES

- A Response Team will be sent to site within 4-8 hours
- Pictorial submitted to client within first 12 hours after the site visit
- Initial report of scope of damage within first 24 hours after the site visit
- Action plan for mitigation on site or immediately within first 24 hours
- Immediate mitigation for small jobs takes 5 - 7 days
- Quotation for repairing work if necessary after mitigation

### IMMEDIATE Response to Water Damage



# THE WATER DAMAGE RESTORATION PROCESS



Every water damage situation is a little different, and requires a unique solution, but the general process stays the same. The steps listed below illustrate our process for the "typical" water damage emergency.

Step 1: Emergency Contact

Step 2: Inspection and Damage Assessment

Step 3: Water Removal/Water Extraction

Step 4: Drying and Dehumidification

Step 5: Cleaning and Sanitizing

Step 6: Repair



[www.mitigation24.com](http://www.mitigation24.com)

[www.mas-siam.com](http://www.mas-siam.com)